



STALL STREET JOURNAL

College of Engineering Office of Safety

SAFETY STARTS WITH YOU

December 2020

Handling Glassware



All glassware should be inspected for chips, cracks and contamination before use.

Cracked glassware should be disposed, and dirty glassware should be cleaned prior to use.

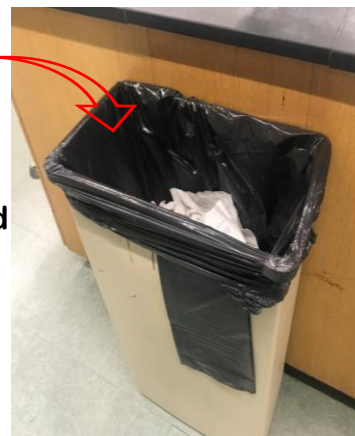
Glassware should also be vented when heating to avoid possible explosion.

Broken glass should be discarded in the appropriate broken glass container.
Clean up with brush and dustpan, NOT with bare hands.



This bin is for
BROKEN GLASS
ONLY

This bin is for
used gloves and
paper towels



If you have any questions about lab wastes or lab safety, contact COE Safety or UW-EHS

If you have ideas for the Stall Street Journal, contact:
coesafety@enr.wisc.edu

Normal chemical bottles can be placed in the waste baskets if they are unbroken and empty (no more than a few drops in the bottom, keep cap on). Place the empty bottle on top of the trash in the waste basket so that the custodian can see it and deal with it appropriately and carefully.

The bottles should be sturdy enough not to break if a bag was set normally on the floor or if they are dumped into a larger receptacle. When the bag is filled it should be placed in a sturdy box for disposal.